

Horn 1 in F

*Louise Farrenc*

*Première Ouverture  
a Grand Orchestre*

*Opus 23*

*Susan Pickett, editor*

**HILDEGARD PUBLISHING COMPANY®**

**Box 332, Bryn Mawr, PA 19010**

## LOUISE FARRENC

Parisian-born Jeanne-Louise Dumont (1804-1875) showed an obvious musical gift at an early age, and received excellent training in both piano and composition. She married Aristide Farrenc, a flautist and music publisher, in 1821 and enjoyed a long and distinguished career as a pianist, composer, and pedagogue.

Most of Louise Farrenc's compositions are for solo piano; other works include three overtures, three symphonies, 4 piano trios, 2 sonatas for violin and piano, a cello sonata, a string quartet, 2 piano quintets (piano, violin, viola, cello, bass), a sextet, and a nonet. Most of her piano and chamber compositions were published by Aristide Farrenc, and many were simultaneously printed by other publishers in England and Germany. However, none of her orchestral music, including the *Première Overture*, was ever published. This piece was composed in August, 1834. It was performed at least once, in 1835. The manuscript of the full score is in the Bibliothèque Nationale in Paris.

## EDITORIAL NOTES

**Important:** in a few places, contradictory dynamic markings are shown. Those in parentheses are the editor's. The conductor should clarify which dynamic markings are desired. All tenuto and staccato markings are editorial.

Dr. Susan Pickett  
Catharine Chism Professor of Music  
Whitman College  
Walla Walla, WA 99362

March 1997

# Première Ouverture

horn 1 in F

*Adagio* (♩ = 60)

Louise Farrenc

Susan Pickett, editor

2

*ff*

*p*

8 solo

*p*

*ff*

*sf*

*sf*

17

*sf*

21 *calando*

*Allegro agitato* (♩ = 120)

13

violin 1 (concert pitch)

38

*f*

44

51

57

*sf*

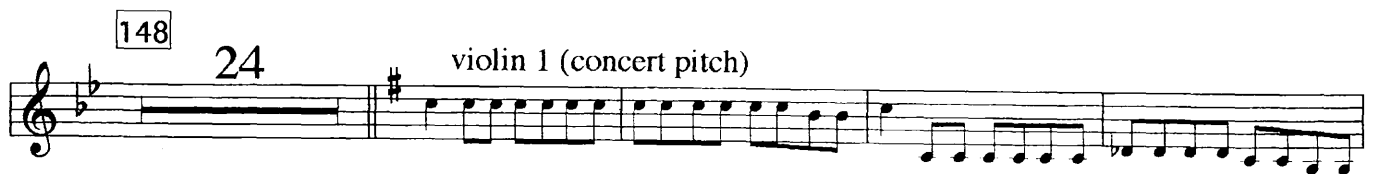
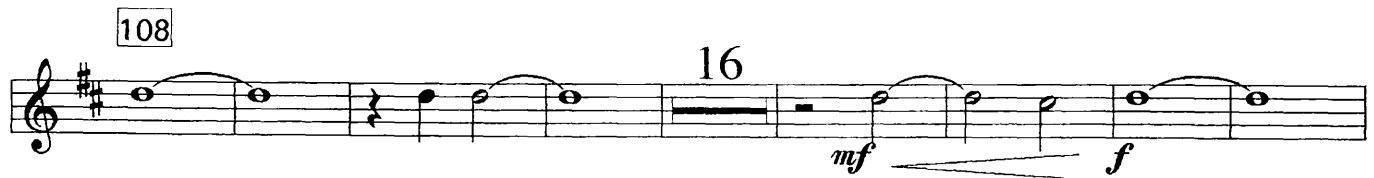
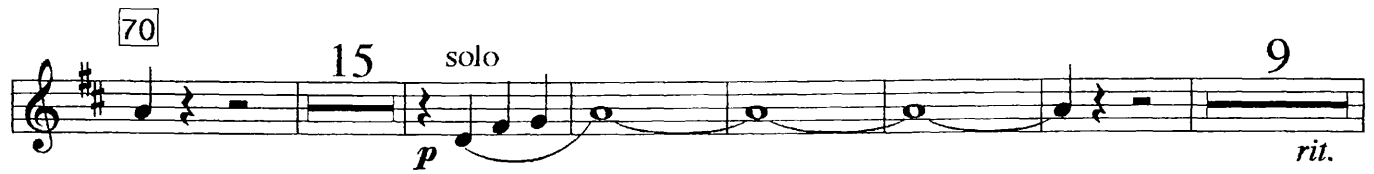
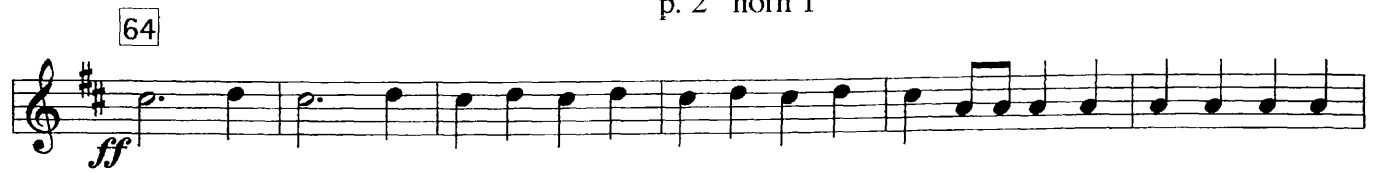
3

© Hildgard Publishing Company 1997

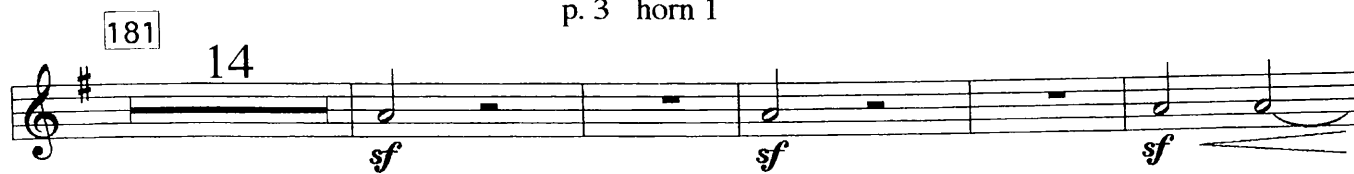
All rights reserved

Reproduction without permission is illegal

p. 2 horn 1



p. 3 horn 1



(this portion of the page left blank for page-turning ease)

p. 4 horn 1

258



267



275



281



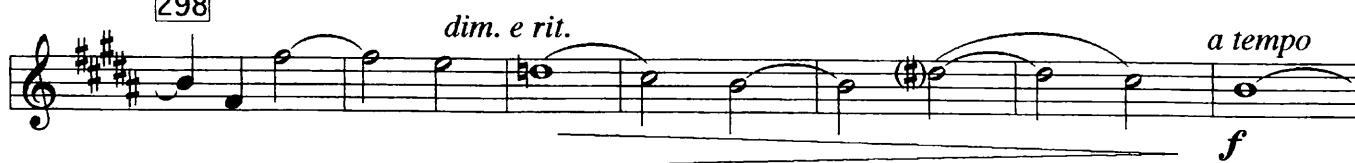
287



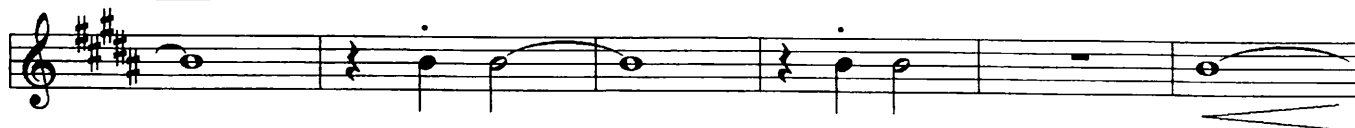
292



298



305



311

p. 5 horn 1



319



327



337



345



354



362



370



Horn 2 in F

*Louise Farrenc*

*Première Ouverture  
a Grand Orchestre*

*Opus 23*

*Susan Pickett, editor*

**HILDEGARD PUBLISHING COMPANY®**

**Box 332, Bryn Mawr, PA 19010**



## LOUISE FARRENC

Parisian-born Jeanne-Louise Dumont (1804-1875) showed an obvious musical gift at an early age, and received excellent training in both piano and composition. She married Aristide Farrenc, a flautist and music publisher, in 1821 and enjoyed a long and distinguished career as a pianist, composer, and pedagogue.

Most of Louise Farrenc's compositions are for solo piano; other works include three overtures, three symphonies, 4 piano trios, 2 sonatas for violin and piano, a cello sonata, a string quartet, 2 piano quintets (piano, violin, viola, cello, bass), a sextet, and a nonet. Most of her piano and chamber compositions were published by Aristide Farrenc, and many were simultaneously printed by other publishers in England and Germany. However, none of her orchestral music, including the *Première Overture*, was ever published. This piece was composed in August, 1834. It was performed at least once, in 1835. The manuscript of the full score is in the Bibliothèque Nationale in Paris.

## EDITORIAL NOTES

**Important:** in a few places, contradictory dynamic markings are shown. Those in parentheses are the editor's. The conductor should clarify which dynamic markings are desired. All tenuto and staccato markings are editorial.

Dr. Susan Pickett  
Catharine Chism Professor of Music  
Whitman College  
Walla Walla, WA 99362

March 1997

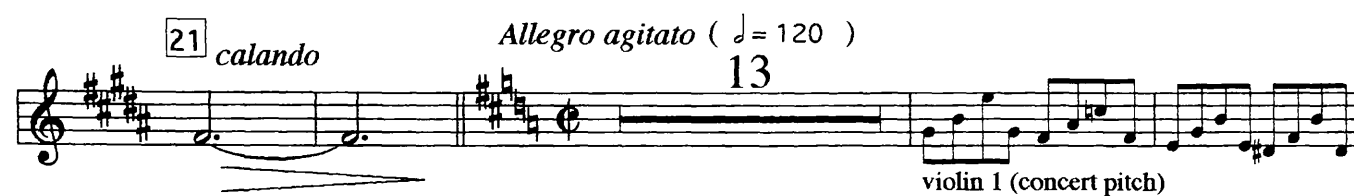
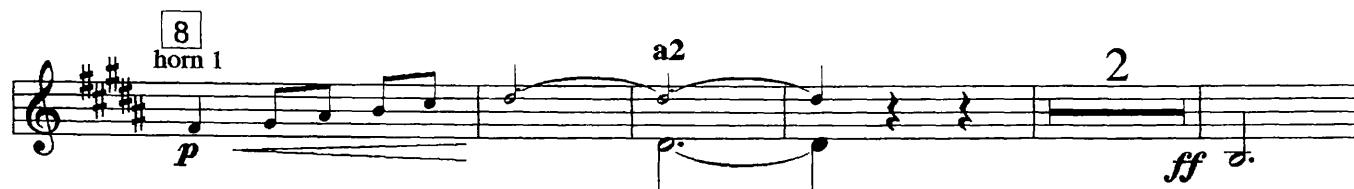
# Première Ouverture

horn 2 in F

*Adagio* (♩ = 60)

Louise Farrenc

Susan Pickett, editor

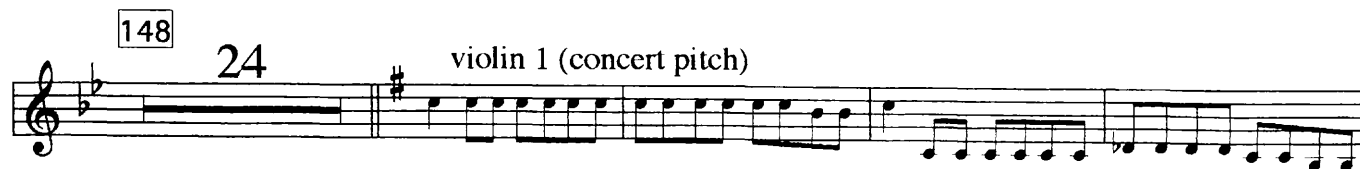
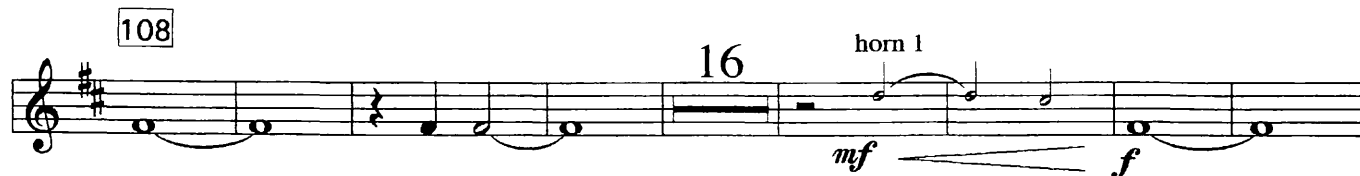
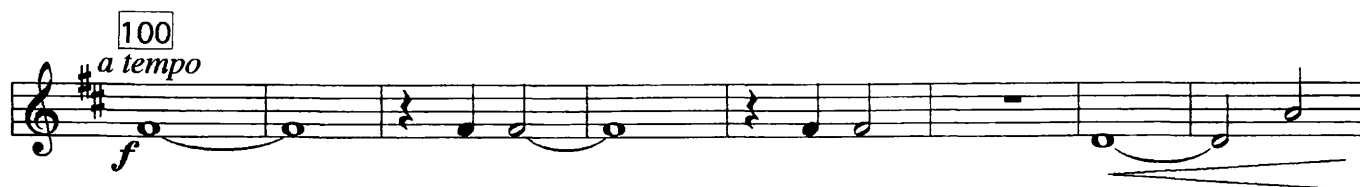
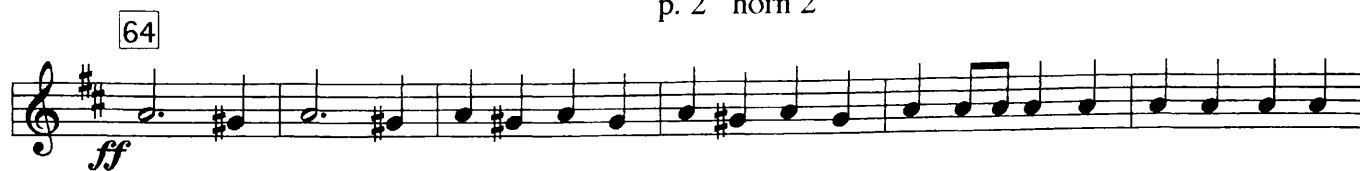


© Hildegard Publishing Company 1997

All rights reserved

Reproduction without permission is illegal

p. 2 horn 2



p. 3 horn 2

181 14

*sf* *sf* *sf*

200

205 32

*f*

241 *a tempo* 13

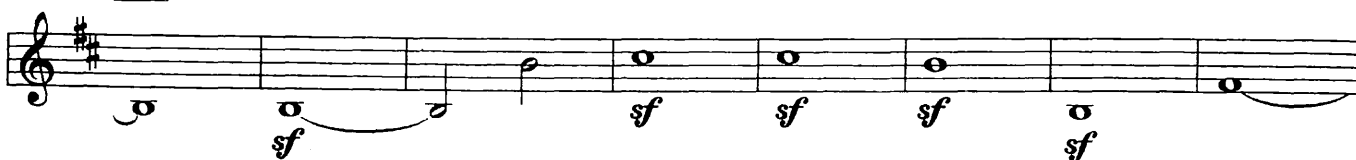
violin 1 (concert pitch)

(this portion of the page left blank for page-turning ease)

258



267



275



281



287



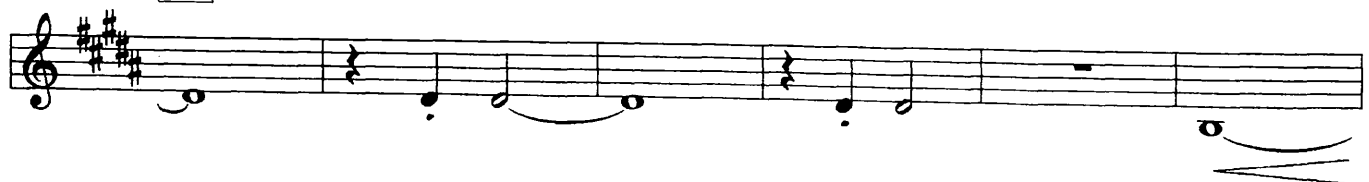
292



298

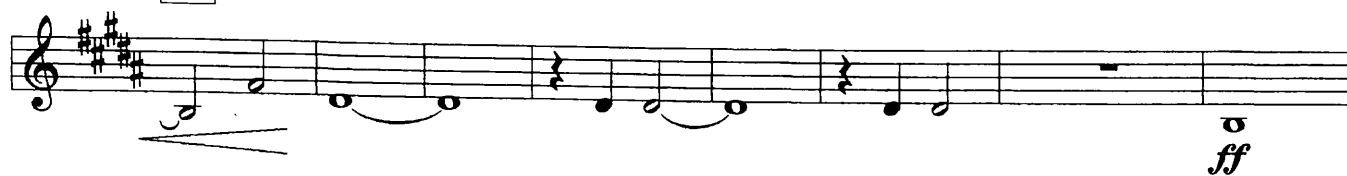


305



311

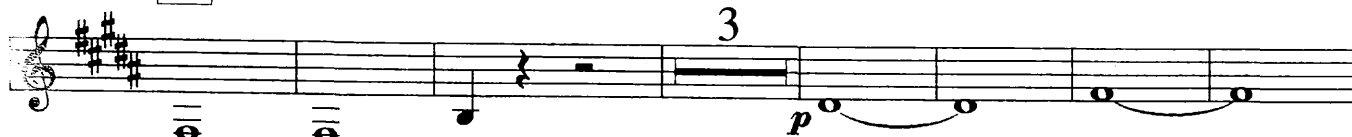
p. 5 horn 2



319



327



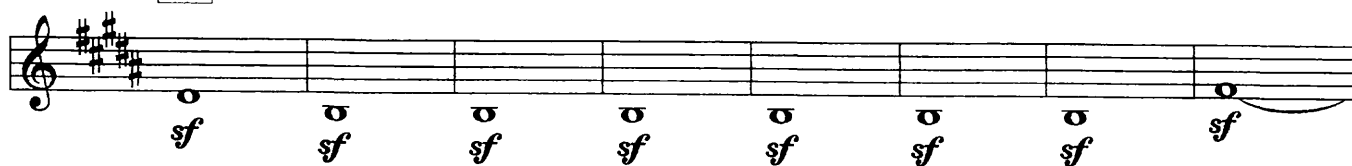
337



345



354



362



369

